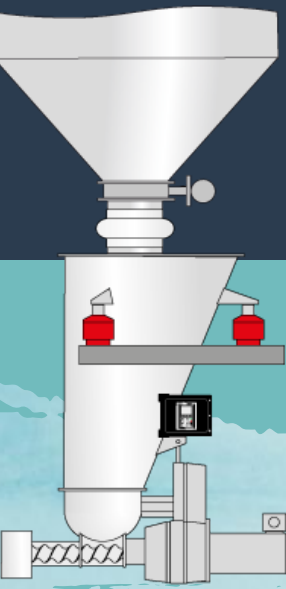


How To Troubleshoot Your Feeder Performance?

➤➤ Loss-In-Weight Feeder



What can I do when there is an alarm?



Is there a material build-up...

...on the screw?

...in the discharge tube?

Yes

No

Yes

No

Blockage in hopper?



Yes

No



Hopper empty?

Yes

No

Remove material build-up or blockage.

Reconfigure your alarm settings if needed. If recurring, consider a non-stick coating or different metal finish.

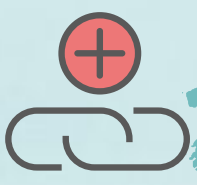
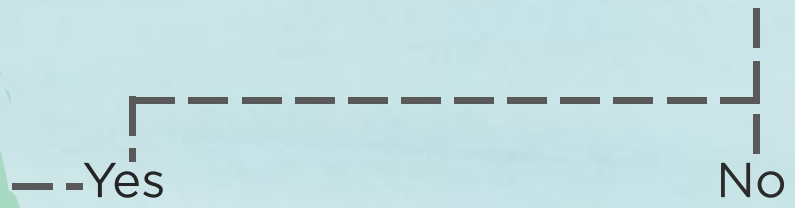


Upstream material delivery system probably has a blockage or other malfunction.

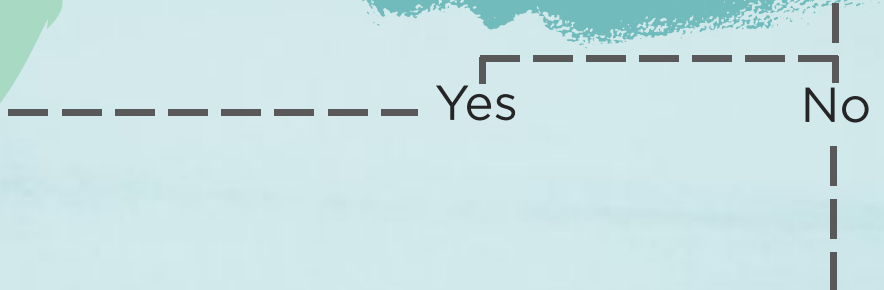
Install the feeder in such a way that the weight sensing device is shielded from the effects of environmental vibrations. Do this by ensuring that the feeder mounting is stable, using flexible connections and shock mounts, and by eliminating strong air currents near the feeder.



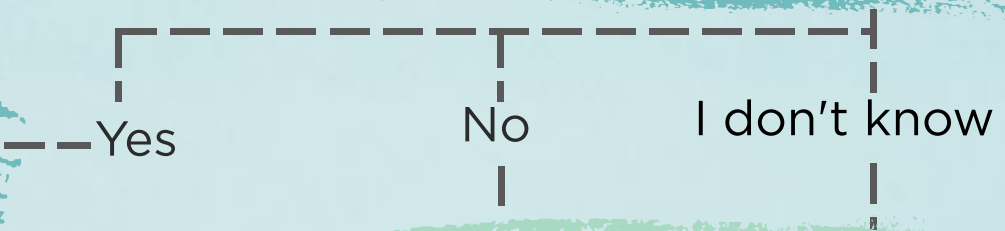
Were the feeder's flexible connections refitted improperly during maintenance?



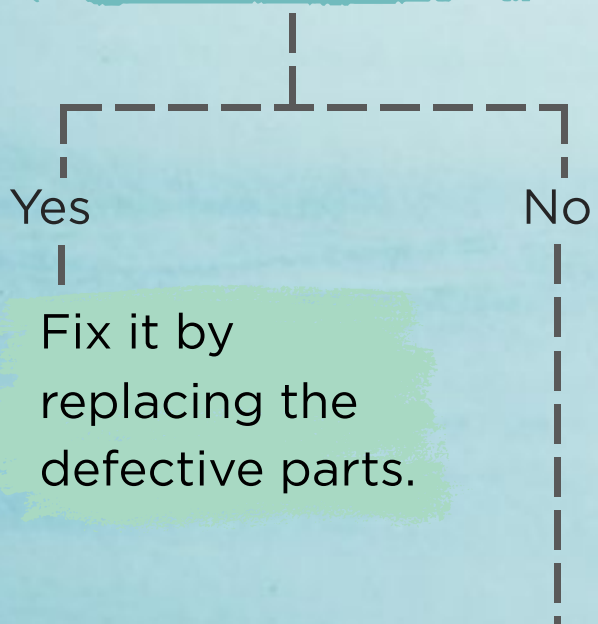
Have you installed new equipment near the feeder?



Has the weight sensing device been properly selected for your application?



Is there a leak or problem with the seal or refill device?



Check changes in resolution, stability, responsiveness, weight signal integrity, vibration sensitivity, reliability, and data communications. Regularly calibrate the weight sensing device.

Is the feeder discharging material to a non-ambient-pressure environment?

Yes

No

Installing an Electronic Pressure Compensation system may be the right solution.

Contact our service team.



Coperion is the industry and technology leader in extrusion and compounding systems, feeding systems and bulk material handling plants.

For more information please visit www.coperion.com or contact info@coperion.com

Follow us

