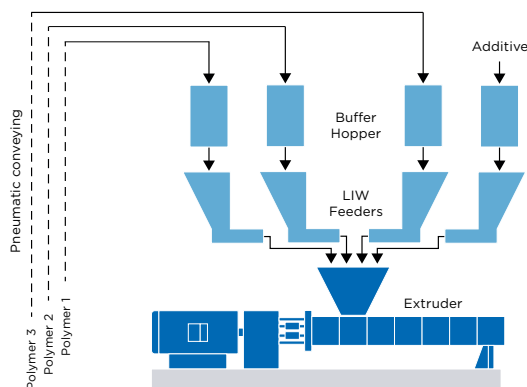


# Bulk Solids Mixer MIX-A-LOT

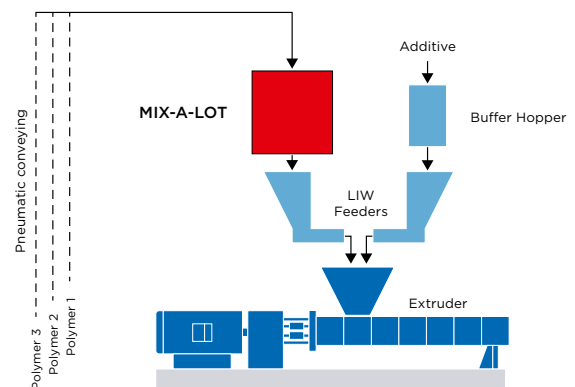


## MIXING, DOSING AND WEIGHING COMBINED IN ONE DEVICE

- \_ Excellent mixing quality: within shortest time and concurrent gentle mixing process
- \_ Easy cleaning: easy and fast accessibility
- \_ Excellent inspection possibilities
- \_ Cost-saving: simpler plant design by replacing several loss-in-weight feeders and receiving hoppers, thus lower investment and maintenance costs
- \_ Precise: very high dosing and weighing accuracy due to an intelligent control system



Konfiguration without MIX-A-LOT

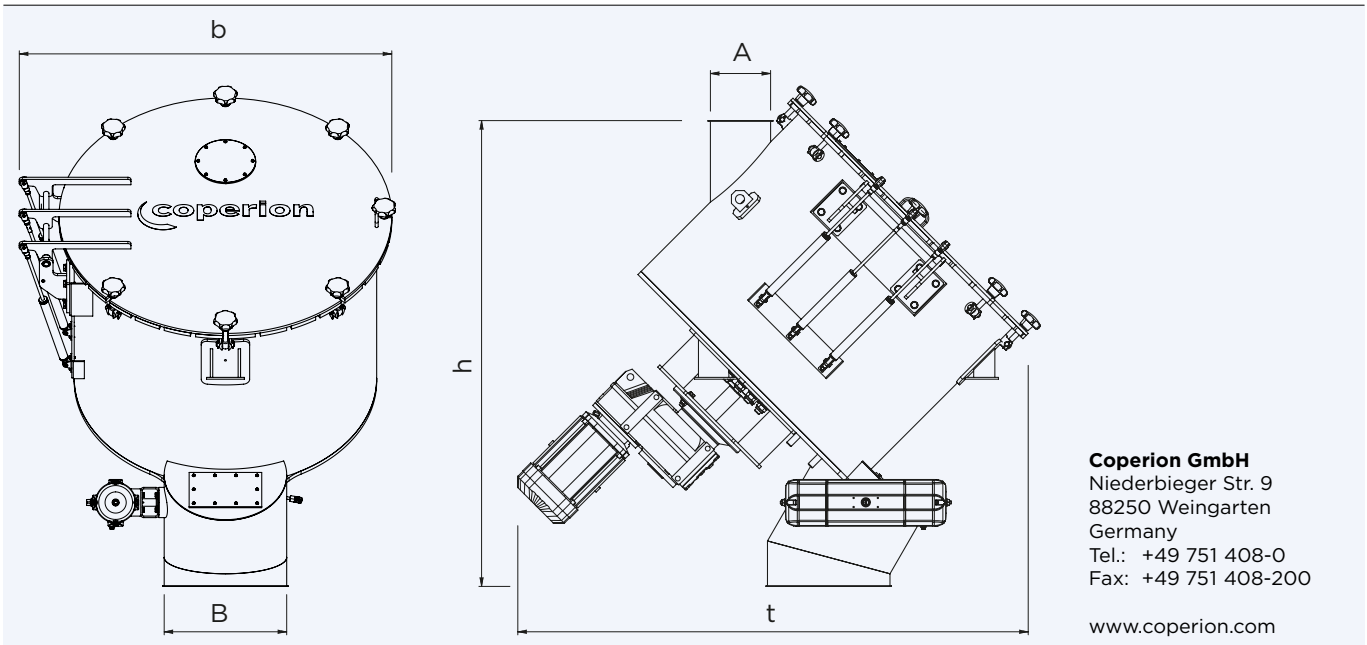


Integration of the mixer MIX-A-LOT in a plant layout

BULK SOLIDS MIXER MIX-A-LOT | MXL

**MACHINE TYPE** Bulk Solids Mixer  
**BULK MATERIAL OPERATION** Free flowing bulk materials  
 Fully automatic mixing process incl. dosing, weighing, mixing and discharge  
**MAX. CAPACITY** Up to 5t/h  
**MAX. BATCH SIZE** Up to 1600l  
**FEEDING** Pneumatic or gravimetric  
**CLEANING/INSPECTION** Excellent accessibility through large inspection lid, inspection openings at discharge valve and lid

**OPTIONS AND ACCESSORIES**  
 \_ Electropolished surface  
 \_ Pneumatic feeding of different components with intelligent control system  
 \_ ATEX-execution  
 \_ Base frame



**Coperion GmbH**  
 Niederbieger Str. 9  
 88250 Weingarten  
 Germany  
 Tel.: +49 751 408-0  
 Fax: +49 751 408-200

www.coperion.com

	Batch size	Capacity*	Diameter Product inlet A	Diameter Product outlet B	Height h	Width b	Depth t	Power installed**	Weight
MXL 200	200l [7 ft <sup>3</sup> ]	< 0.7 t/h	150 [5.9]	350 [13.8]	1180 [46.5]	1050 [41.3]	1400 [55.1]	2.2 kW [2.9 hp]	390 kg [860 lb]
MXL 400	400l [14 ft <sup>3</sup> ]	< 1.5 t/h	200 [7.9]	400 [15.8]	1480 [58.3]	1270 [50]	1700 [66.9]	4 kW [5.4 hp]	640 kg [1410 lb]
MXL 800	800l [28 ft <sup>3</sup> ]	< 3.0 t/h	250 [9.8]	500 [19.7]	1860 [73.2]	1570 [61.8]	2100 [82.7]	7.5 kW [10.0 hp]	1090 kg [2400 lb]
MXL 1600***	1600l [56 ft <sup>3</sup> ]	< 5.0 t/h	350 [13.8]	600 [23.6]	2300 [90.6]	1800 [70.9]	2500 [98.4]	11 kW [14.8 hp]	2000 kg [4410 lb]

Dimensions in mm [in], if not otherwise specified \*for  $\rho_s = 500 \text{ kg/m}^3$  \*\*Standard supply 400V/50Hz \*\*\*Preliminary values

All rights reserved