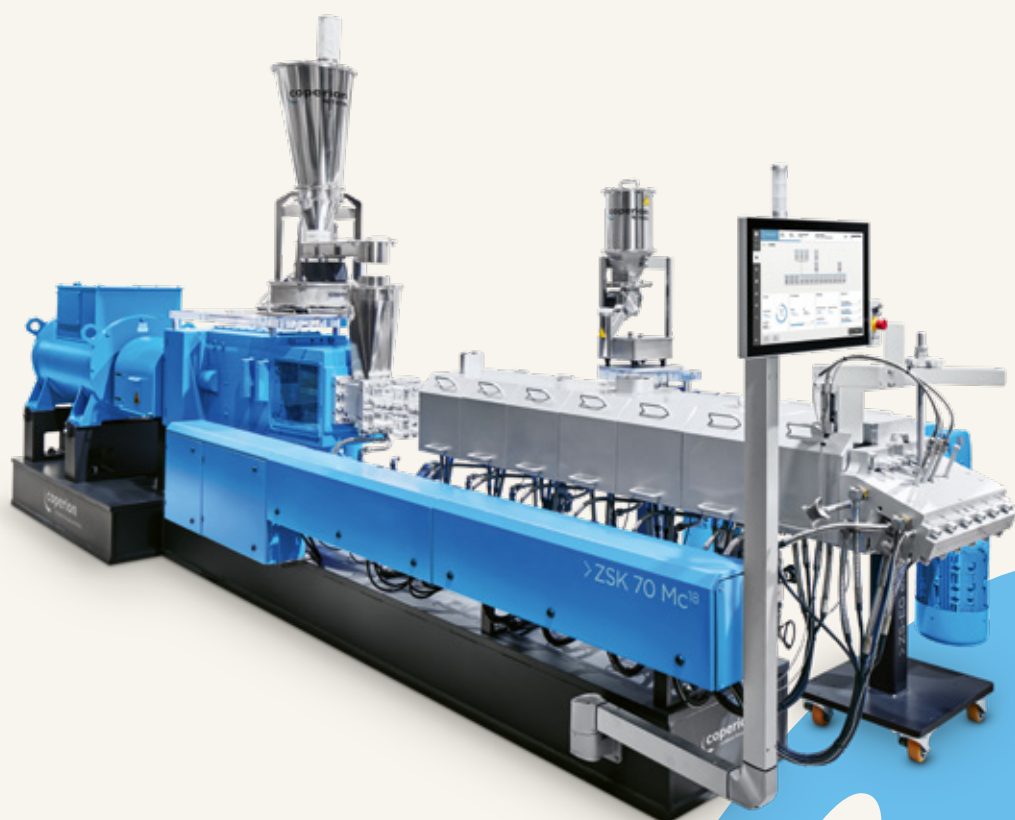




ZSK twin screw extruders.

Wear and corrosion material portfolio of barrels and screw elements.

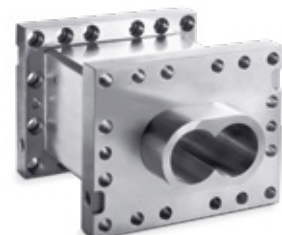




→ Wear and corrosion resistant screw elements



→ Direct coated barrel



→ Barrel with oval liner

Material portfolio of extruder barrels*

Barrels	Material code	Material	Design	Area of application**	
				Wear	Corrosion
PROTECT BASIC	WP 015-001	Nitriding steel (standard), nitrided	Solid	••	•
PROTECT PLUS	WP 095	Fe-based PM material (10V)	Oval liner	••••	•
PROTECT PLUS	WP 030	Martensitic (Cr-Mo) stainless steel	Oval liner	••	•••
PROTECT PLUS	WP 043+	Fe-Cr-based PM material	Oval liner	•••	•••
PROTECT PLUS	WP 005-043+	Barrel: martensitic stainless steel, liner: Fe-Cr-based PM material	Oval liner	•••	•••
PROTECT PLUS	WP 098	Ni-based PM material	Oval liner	••	••••
PROTECT PLUS	WP 099.6	Ni-based PM material	Oval liner	•••	••••
PROTECT PLUS	WP 072-099.6	Barrel: Ni-based, liner: Ni-based PM material	Oval liner	•••	••••
PROTECT PLUS	WP 015-016	Barrel: standard, coating: WC braze cladding	Direct coating of the 8-bore	•••••	•••
PROTECT PLUS	WP 015-023	Barrel: standard, coating: Co-based PM material	Direct coating of the 8-bore	••	••••
PROTECT EXTREME	WP 015-99.8	Barrel: standard, liner: WC-Ni-based PM material C-Rock	Oval liner	•••••	••••
PROTECT EXTREME	WP 015-29.2	Barrel: standard, coating: WC-Ni-based PM material C-Rock	Direct coating of the 8-bore	•••••	••••

Material portfolio of screw elements*

Screw elements	Material code	Material	Design	Area of application**	
				Wear	Corrosion
PROTECT BASIC	WP 00	Nitriding steel (standard), nitrided	Solid	••	•
PROTECT PLUS	WP 40	Standard	Ni-based crest welding	•••	••
PROTECT PLUS	WP 05	Martensitic (Cr-Mo) stainless steel	Solid	••	•••
PROTECT PLUS	WP 15	Fe-based PM material	Composite material	••••	•
PROTECT PLUS	WP 25	Fe-Cr-based PM material	Composite material	•••	•••
PROTECT PLUS	WP 28	Cr-Ni stainless steel	Ni-based crest welding	•	••••
PROTECT EXTREME	E 60	High speed tool steel PM material	Composite material	•••••	•
PROTECT EXTREME	E 12	High speed tool steel PM material	Composite material with CVD coating	•••••	•
PROTECT EXTREME	WP 16	Ni-based material	Ni-based crest welding	•	•••••

* Further material upon request. ** • = Low, ••••• = High

Headquarters

Coperion GmbH | Theodorstrasse 10 | 70469 Stuttgart, Germany | info@coperion.com
coperion.com | fhn.coperion.com

Find your nearest
Coperion location

