



coperion

SERVICE PRESENTATION

Hans-Peter Neuberger
General Manager South Korea

➤ The Coperion global service network



> Coperion South East Asia (Coperion SEA)



New Coperion office in Rayong Thailand

Spare parts, site service and inhouse repairs for:

- ✓ Compounding & extrusion
- ✓ Material Handling
- ✓ Ktron Feeders



>> Additional information

October 1, 2023, **all service** activities from Coperion Singapore were stopped
Sales activities for new equipment continue from Coperion Singapore



Infeed in South Korea

Your partner for all service topics





Aftermarket Sales & Service

The Infeed Service Team



Service Director // S.J. Bong
Sjbong@infeed.co.kr

Coperion Extruder

Mr. B.H. Choi
Mr. Robbin Kim

Coperion Extruder
Spare part

Ms. Tracy Ko
Mr. Louis Ji

Coperion K-Tron Feeder

Mr. B.H. Choi
Mr. W. DOO & S.W.KIM

Coperion K-Tron Feeder
Spare Part.

Ms. Soo Han
Ms. H.Y. Sun

Coperion Material Handling

Mr. Cole Han
Mr. Robbin KIM

Coperion Mateiral Handling
Spare part

Ms. Tracy Ko & Mr. Cole Han

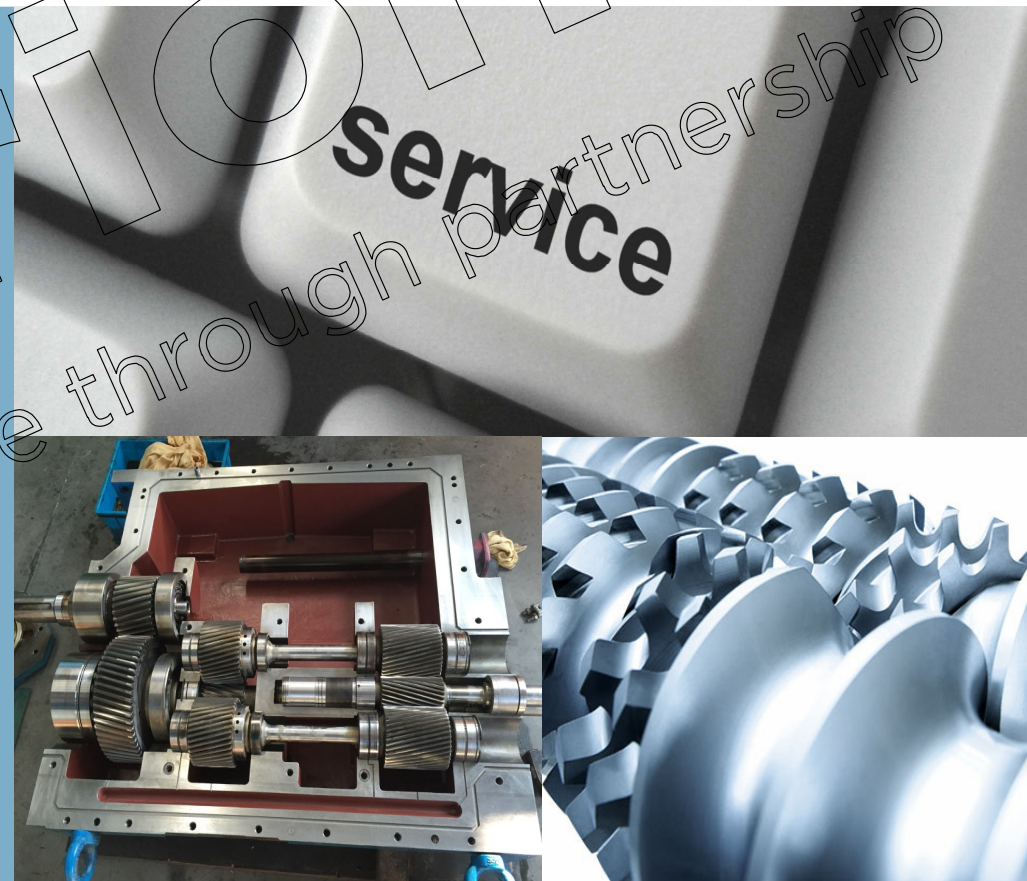
➤ Aftermarket Sales & Service Division



For longtime reliable processes: A worldwide service net

Innovative services for any industry

- Most comprehensive service network in the industry
- Over 450 experienced service technicians and service engineers worldwide
- Emergency service
- Spare parts, incl. emergency stock
- Maintenance & repair
- Modernization to increase output, efficiency, and safety and to save energy consumption of a production system
- Predictive maintenance and increase of OEE with C-Beyond
- Remote services for easy start-up and operation
- Site management
- Service consulting
- Service agreements
- Comprehensive range of trainings
- Test Centers worldwide for a wide range of processes





CSEA Spare Parts service



CSEA has direct access to the Coperion global spare parts stock via SAP, Navision & IFS.

Qualified local staff available for quotations and technical support

Display material BOM: Item: All data

Reference items | Subitems | Long Text

Material: 20402807 Screw barrel, closed WPR 29
Plant: 0001 Coperion GmbH
Alternative BOM: 1
Usage: 2 Design Engineering

Basic Data | Status/Lng Text | Administr. | Document Assgmt

BOM item

Item Number: 0001
Component: 20402801 Screw barrel, closed
Item Category: L Stock item
Item ID: 00000001
Sort String:
☐ Sub-item ID

Quantity Data

Coperion SEA Ltd - Microsoft Dynamics NAV Classic - [IP500228 A4-X1 Spare parts for ZSK380, 20537705, 64061018 - Quote Logistics View]

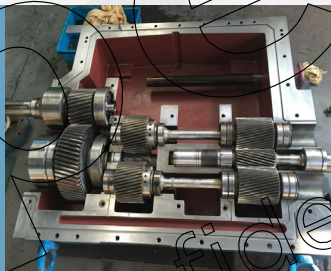
Blind out...	Re...	JSP Code	S1	S2	S3	S4	S5	Type	No.	Calculation	TYM Code	Description	Additional Description
		40436	10					Assembly	9CWP			Spare parts for ZSK380, 20537705, 64061018	
		40437	10	10				Item	1000300/62004800	MATL. IC		Cylinder double acting	50990-152487
		40438	20					Assembly	9CWP			Additional spare part ZSK380, 20537705, 64...	
		42980	20	10				Item	1000300/20418126	MATL. IC		Plug	50990-1228-08
		42981	20	20				Item	1000300/22009143	MATL. IC		Shaft	80502-3613-02
		42982	20	30				Item	1000300/20418222	MATL. IC		Throttle	50990-1228-16
		42983	20	40				Item	1000300/20418221	MATL. IC		Bushing	50990-1228-18
		42984	20	50				Item	1000300/20418220	MATL. IC		Bushing	50990-1228-19
		42985	20	60				Item	1000300/20418219	MATL. IC		Bushing	50990-1228-20
		42986	20	70				Item	1000300/20418218	MATL. IC		Bushing	50990-1228-21
		42987	20	80				Item	1000300/20033920	MATL. IC		Bushing	50990-639-22
		42988	20	90				Item	1000300/20033921	MATL. IC		Flange	50990-639-23
		42989	20	100				Item	1000300/20033922	MATL. IC		washer	50990-639-24
		42990	20	110				Item	1000300/10000328	MATL. IC		Cheese head screw DIN 912 - M16X50	2142131072
		42991	20	120				Item	1000300/10015967	MATL. IC		Packing ring	1652115032
		42992	20	130				Item	1000300/15004861	MATL. IC		Spiral sealing ring SPIROFLEX SPZ 1 NG	2490002392
		42993	20	140				Item	1000300/15095708	MATL. IC		Sealing disc	
		42994	20	150				Item	1000300/15082415	MATL. IC		Sealing set for cylinder double acting	

➤ Repair at customer site and In-house



We provide standardized and highly customized service packages for machines and plants. Our maintenance work secures your plant reliability and checks that resources are being deployed efficiently.

Overhaul of components, gearboxes, die plates, knife rotors, barrels, controls and weighing technology



Stack-out service (screw exchange)



Preventive maintenance programs



Calibration, mechanical & electrical repair





Service agreements

Customer benefit

▶ Full-Service Agreement

Highest efficiency and optimal availability of machines due to inspection and maintenance service complete from one source

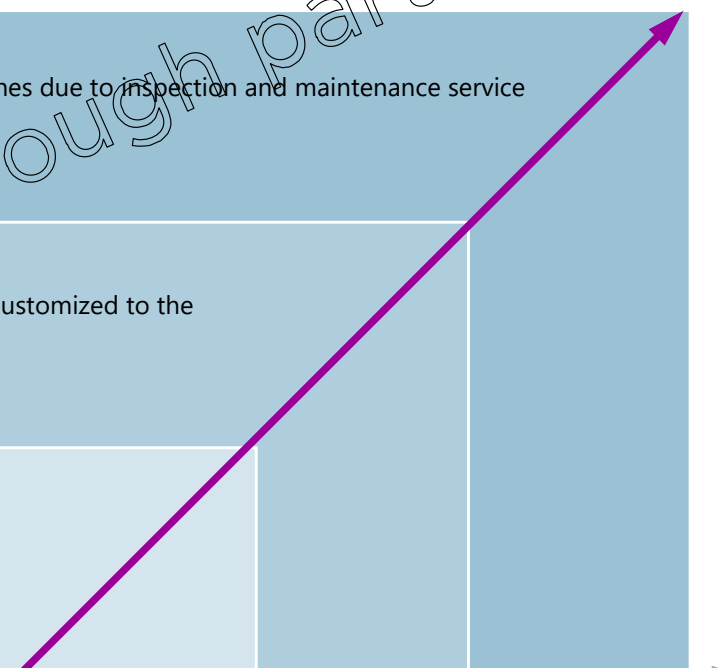
▶ Service Agreement

Inspection and preventive maintenance individual customized to the customers requirements

▶ Inspection Agreement

Regular inspections of machines and plants

Scope of service





Service Agreement



- Start with an inspection to find out the actual status & condition
- Based on the inspection report, which will be shared by our engineer with customer and Service team, we will decide, if further steps (maintenance or modernization) are recommended or if the Extruder is in a good condition
- **+60 systems** under contract

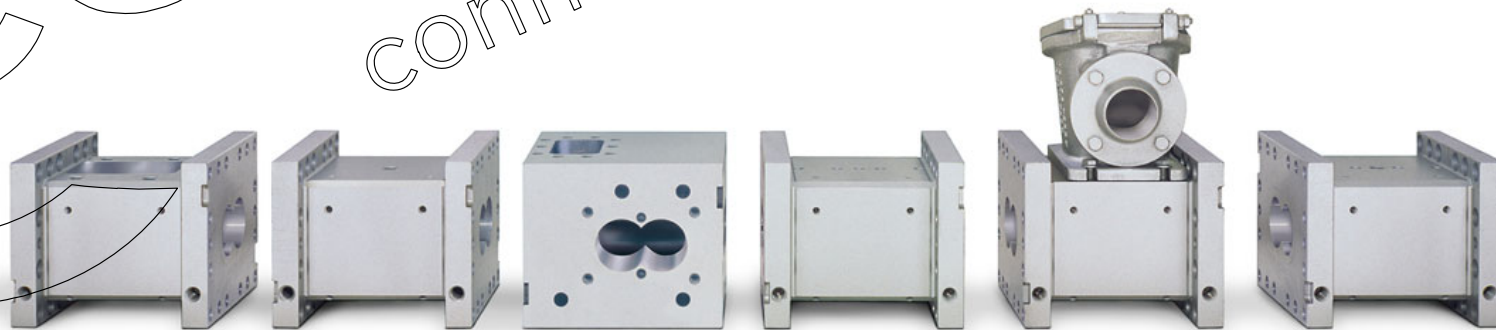
Benefits for the customer:

- ✓ Transparent control of all costs (Customer pays only, what has been spent!)
- ✓ Extension of lifetime
- ✓ Predictive maintenance
- ✓ Documentation and certification management (if needed)
- ✓ Inspection by a qualified OEM Coperion engineer





Process section check-up





Process section check-up

Each barrel and each screw element will get worn by time.

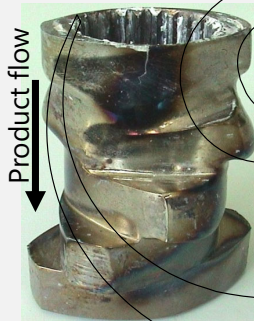
The lifetime of each part depends on:

On the location of its installation along the process section

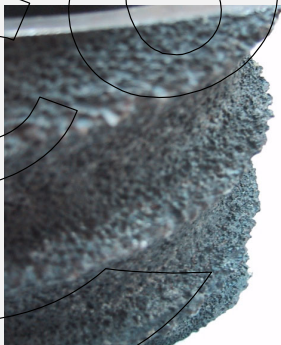
On the screw arrangement itself

On frequency of start and stops and on the operating conditions

The products that are produced



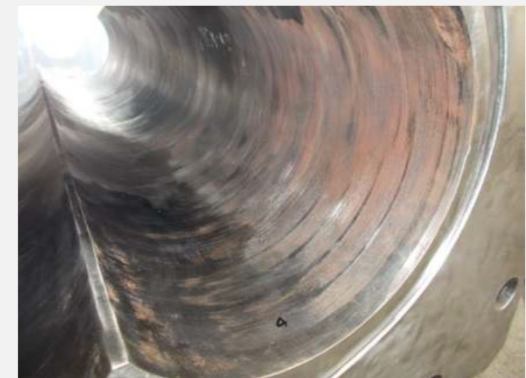
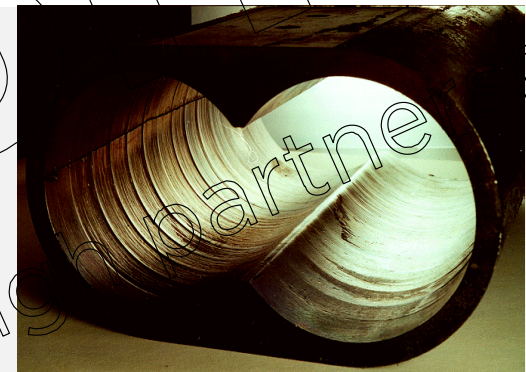
Abrasion



Corrosion



Adhesion



➤ Process section check-up

Results of a worn process section

Metal contamination of final product

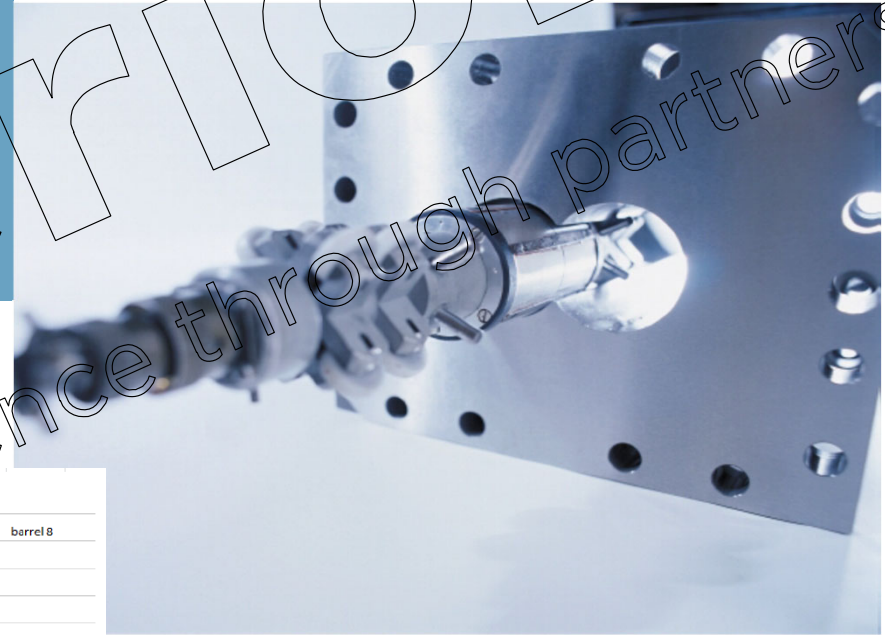
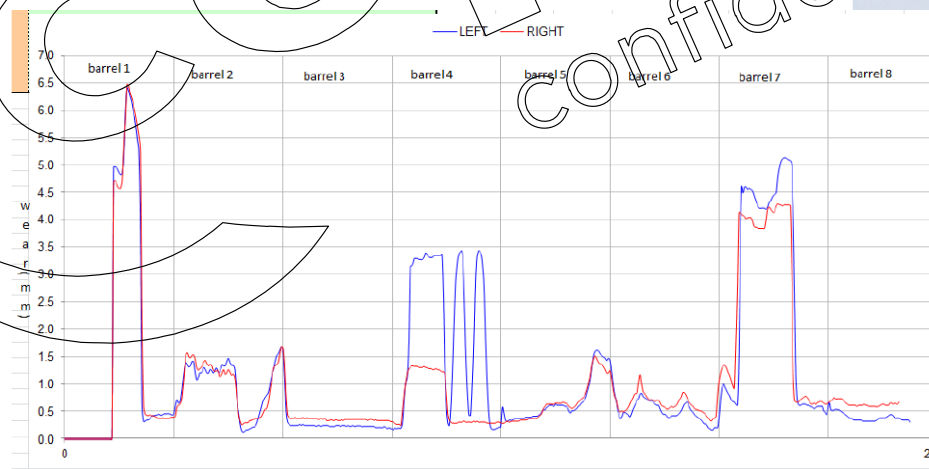
Reduced mixing capacity

Higher energy consumption





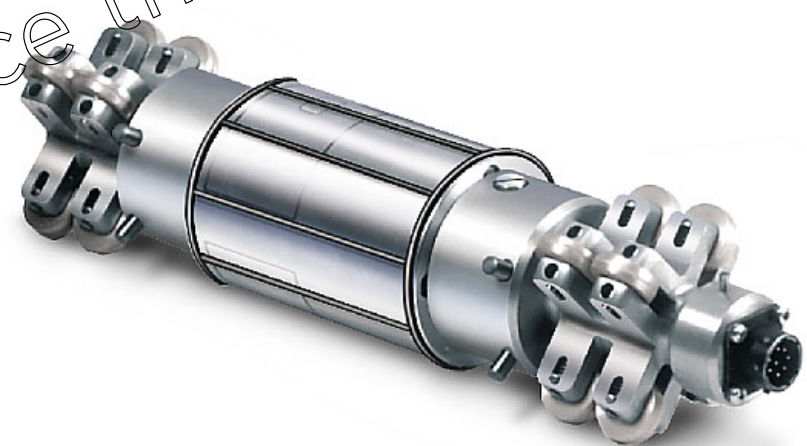
Barrel Bore Measurement



➤ Barrel Bore Measurement BBM

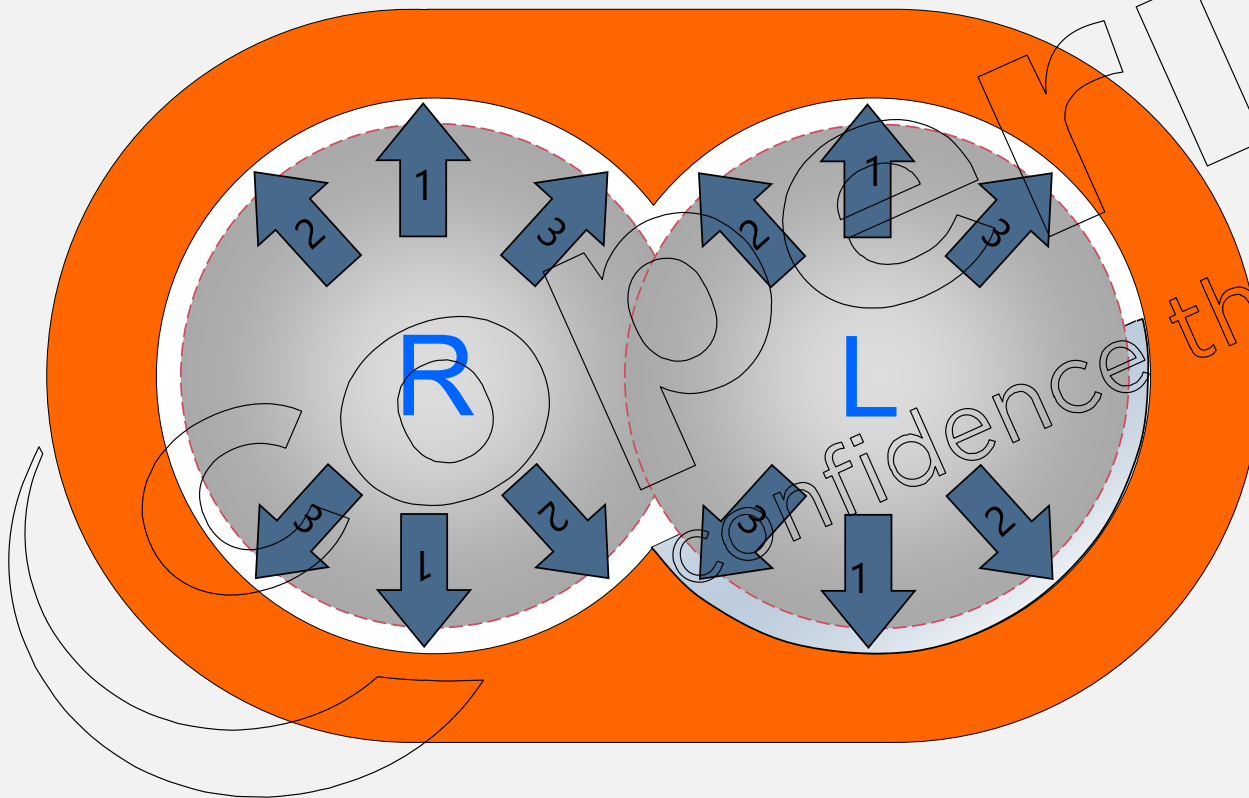
WHAT WE OFFER?

- Precise measurement of the barrel bore without disassembly of the processing barrels
- Analysis of the discovered defects, reporting and a detailed risk assessment
- Suitable for preventive failure detection to minimize production losses
- Suitable for ZSK 32 to ZSK 177





Barrel Bore Measurement BBM

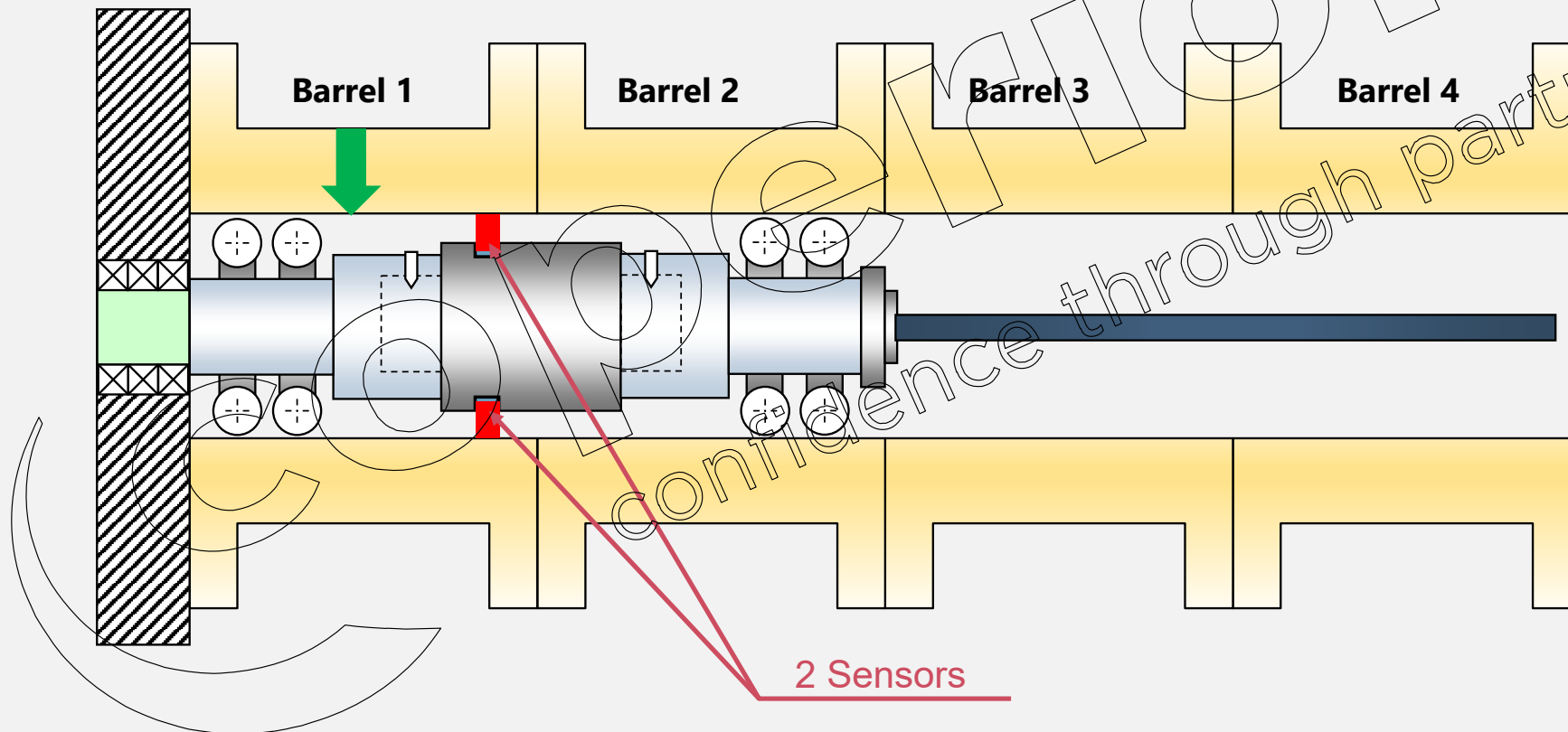


3 measurements in every bore

One measurement every 5 mm



Barrel Bore Measurement BBM





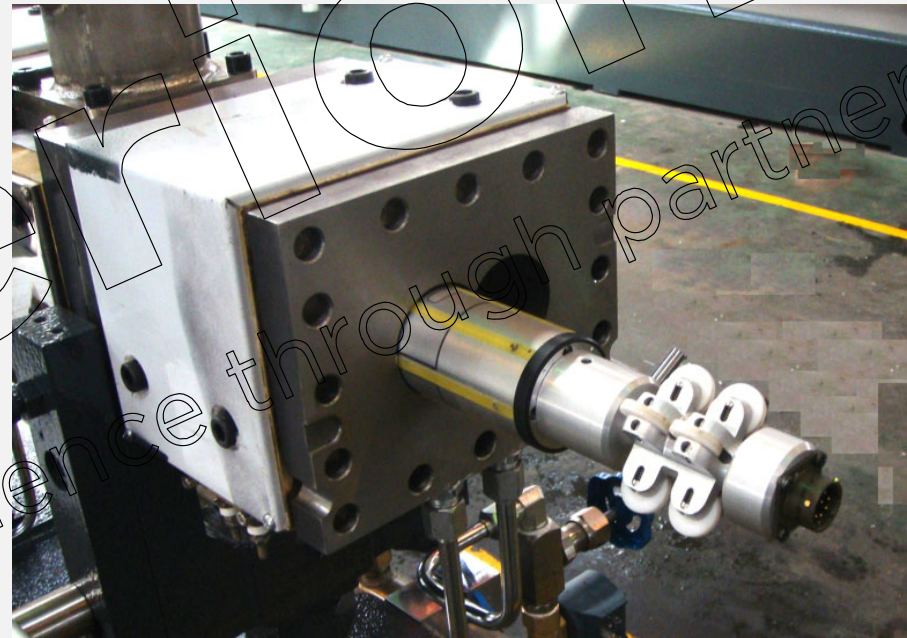
Barrel Bore Measurement BBM

Preconditions:

Screw shaft removed

Barrel inner surface cleaned

Extruder at ambient temperature

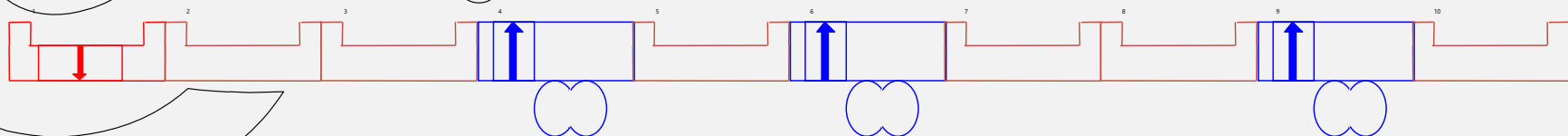


First BBM recommended after 3 years production

It takes 1 hour to measure an extruder



Barrel Bore Measurement BBM



Data also available as .xls file

SSE can be checked at the same time



Gearbox

Preventive maintenance





Gearbox preventive maintenance



Coperion recommends gearbox overhaul after 5 years of operation

Replace all bearings and seals

Check gearwheel tolerances

Magnetic particle test of all shafts

Check timing of output shafts

Assembly and none load test run



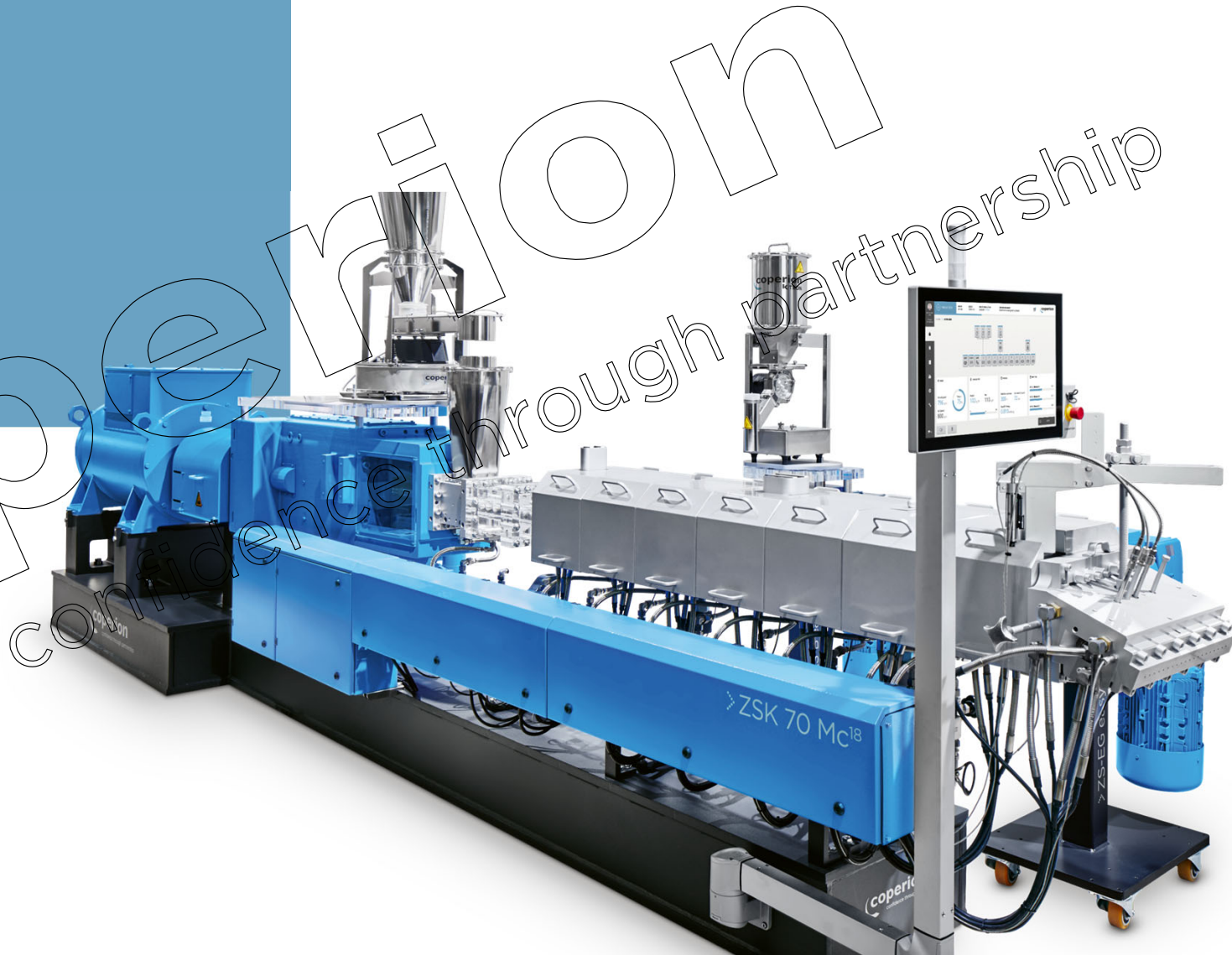
Gearbox preventive maintenance

Saving money on maintenance can become costly



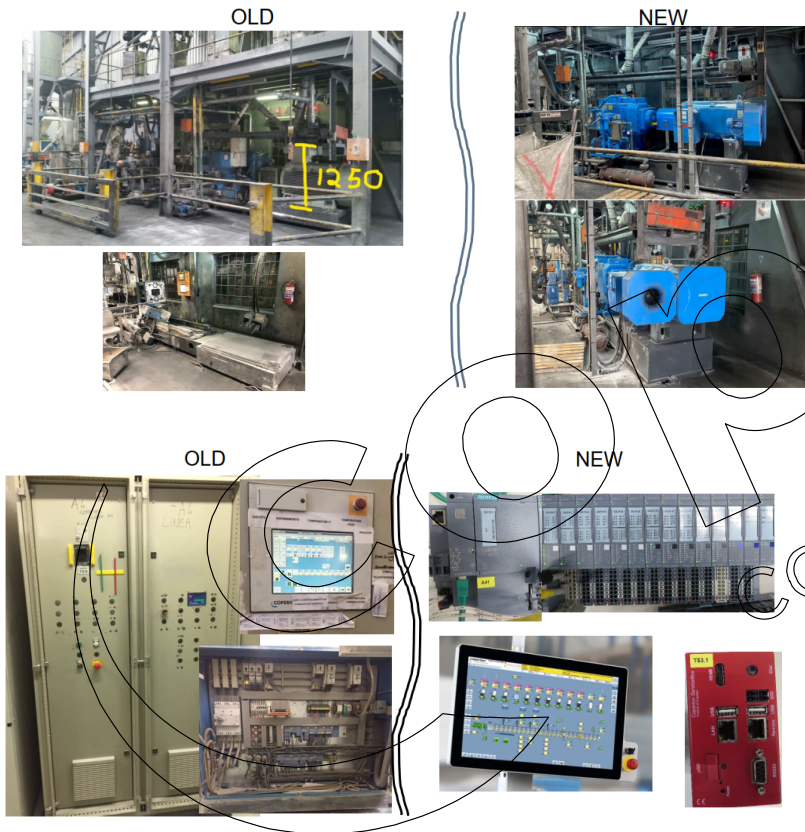


Modernization





Modernization



Modernization of existing machines

- Improve Operator Safety
- Increase reliability
- Increase throughput
- Reduce energy consumption
- Eliminate bottlenecks
- Replace obsolete equipment (control systems)



Contact

S.J. Bong

Service Director of INFEED corp
14-7 Wonoil-Gi, 41beon-gil,
Jeongnam-myeon, Hwaseong-Si,
Gyeonggi-do, South Korea

Phone +82 31 8059 4455~6

E-Mail sjbong@infeed.co.kr

Web : www.InFeed.co.kr

For Extruder & PCS service & part

Louis Ji / Assistant Manager

Tracy Ko / Deputy General Manager

Phone +82 31 8059 4455~6

E-Mail louisji@infeed.co.kr

tracy.ko@infeed.co.kr

Web : www.InFeed.co.kr

For Component service & part

Cole Han / Manager

Phone +82 31 8059 4455~6

E-Mail colehan@infeed.co.kr

For Feeder service & part

H.Y. SUN / Manager

Phone +82 31 8059 4455~6

E-Mail hysun@infeed.co.kr



coperion

THANK YOU VERY MUCH
FOR YOUR ATTENTION.

You're very welcome to follow us.

