



coperion

**COPERION SERVICE: 450
PARTNERS SECURE YOUR FUTURE**

Roadshow Japan Oct 2024

Shinta Hirata

Service Manager, Coperion Japan

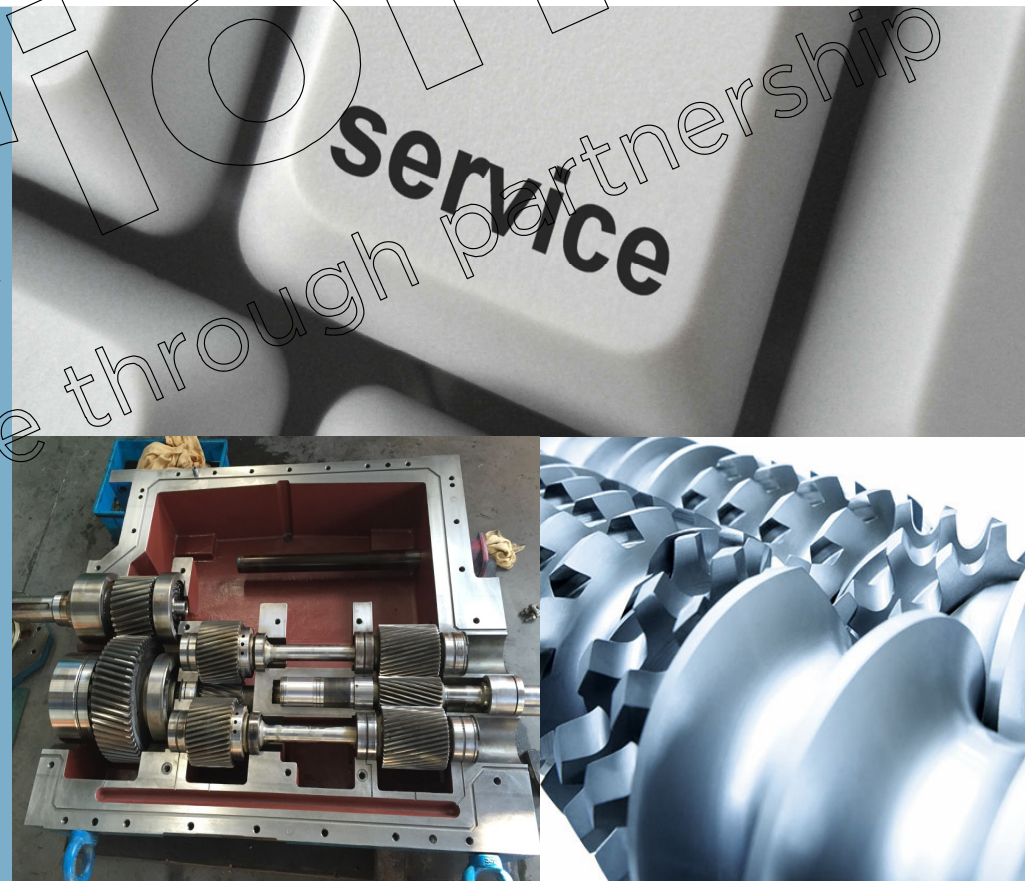
Aftermarket Sales & Service Division



For longtime reliable processes: A worldwide service net

Innovative services for any industry

- Most comprehensive service network in the industry
- Over 450 experienced service technicians and service engineers worldwide
- Emergency service
- Spare parts, incl. emergency stock
- Maintenance & repair
- Modernization to increase output, efficiency, and safety and to save energy consumption of a production system
- Remote services for easy start-up and operation
- Site management
- Service consulting
- Service agreements
- Comprehensive range of trainings
- Test Centers worldwide for a wide range of processes



➤ The Coperion global service network





Aftermarket Sales & Service

Coperion Japan



- Coperion Japan and our local partners offer the entire Coperion Aftermarket Portfolio to our valuable customers in Japan since more than 30 years!

Examples of our activities:

- | | |
|---|-------------------------------------|
| ➤ Spare parts: | Selling approx. 5000 items per year |
| ➤ Maintenance service: | Approx. 15 to 20 per year |
| ➤ Gearbox overhauls: | 5 to 8 per year |
| ➤ Modernization: | 3 to 5 jobs per year |
| ➤ Technical support / trouble shooting: | Approx. 300 per year |
| etc. | |

We can provide our services for all machines delivered by Coperion



CJP Spare Parts service



CJP has direct access to the Coperion global spare parts stock via SAP.
Qualified local staff available for quotations and technical support

Stock/Requirements List as of 16:16 hrs

Show Overview Tree Qualitätsbest. Freier Best.

Material **15018740** Set bolt with buffer
Plant 0001 MRP type V1 Material Type ROH Unit PCS

Display material BOM: Item: All data

Reference items Subitems Long Text

Material **20402807** Screw Barrel, closed WPR-29
Plant 0001 Coperion GmbH
Alternative BOM 1
Usage 2 Design Engineering

Basic Data Status/Long Text Administr. Document Assignm

BOM item

Item Number 0001
Component 20402801 Screw barrel, closed
Item Category L-Stock item
Item ID 00000001
Sort String
☐ Sub-item ID

Quantitv Data

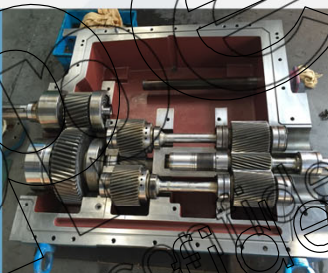
Item data	St...	Recept...	Regmt	Beschedul...	Qualität...	Fr...	Available Qty
					1,000		1,000
0834/000100/0...			1,000-				0,000
1422/000100/0...	WE01		2,000				2,000
0095/000100/0...			1,000-				1,000
2449/SDeb	WE01		1,000				2,000
0803/000100/0...			1,000-				1,000
9147/SDeb*	WE01		2,000	14.10.2024			3,000
0709/000200/0...			1,000-				2,000
0792/000200/0...			1,000-				1,000
0832/000100/0...			1,000-				0,000
8193/SDeb*	WE01		1,000	14.10.2024			1,000

➤ CJP repair at customer site and Cooperation companies



We provide standardized and highly customized service packages for machines and plants. Our maintenance work secures your plant reliability and checks that resources are being deployed efficiently.

Overhaul of components, gearboxes, die plates, knife rotors, barrels, controls and weighing technology



Stack mill service (screw exchange)



Preventive maintenance programs



Calibration, mechanical & electrical repair



Service agreements

Customer benefit

Full-Service Agreement

Highest efficiency and optimal availability of machines due to inspection and maintenance service complete from one source

Service Agreement

Inspection and preventive maintenance individual customized to the customers requirements

Inspection Agreement

Regular inspections of machines and plants

Scope of service



Service Agreement



- Start with an inspection to find out the actual status & condition
- Based on the inspection report, which will be shared by our engineer with customer and Service team, we will decide, if further steps (maintenance or modernization) are recommended or if the Extruder is in a good condition

Benefits for the customer:

- ✓ Transparent control of all costs (Customer pays only, what has been spent!)
- ✓ Extension of lifetime
- ✓ Predictive maintenance
- ✓ Documentation and certification management (if needed)
- ✓ Inspection by a qualified OEM Coperion engineer





Process section check-up





Process section check-up

Each barrel and each screw element will get worn by time.

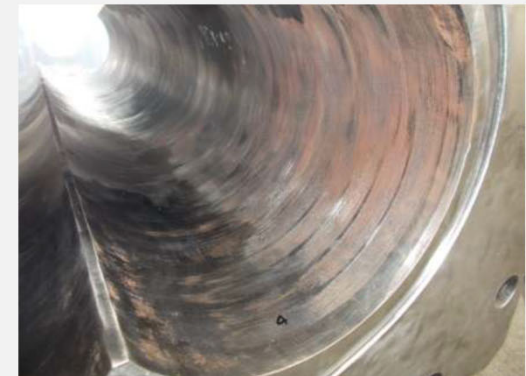
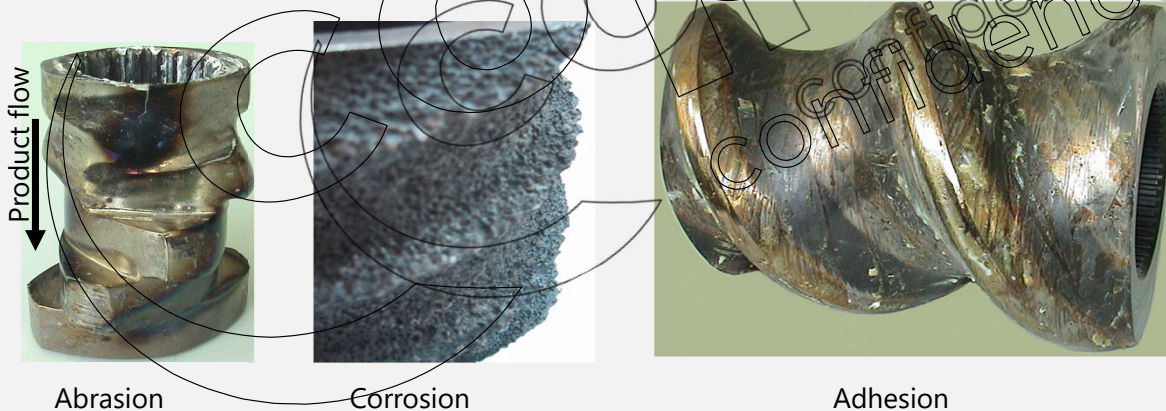
The lifetime of each part depends on:

On the location of its installation along the process section

On the screw arrangement itself

On frequency of start and stops and on the operating conditions

The products that are produced



➤ Process section check-up

Results of a worn process section

Metal contamination of final product

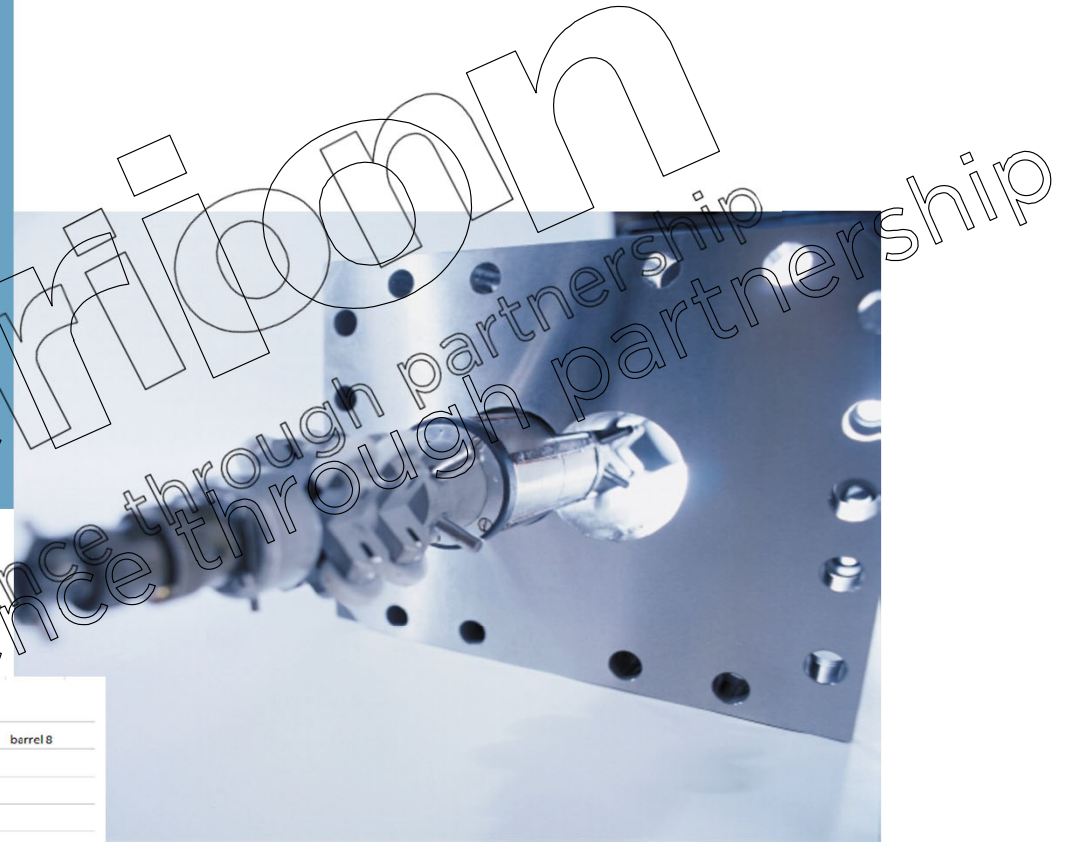
Reduced mixing capacity

Higher energy consumption





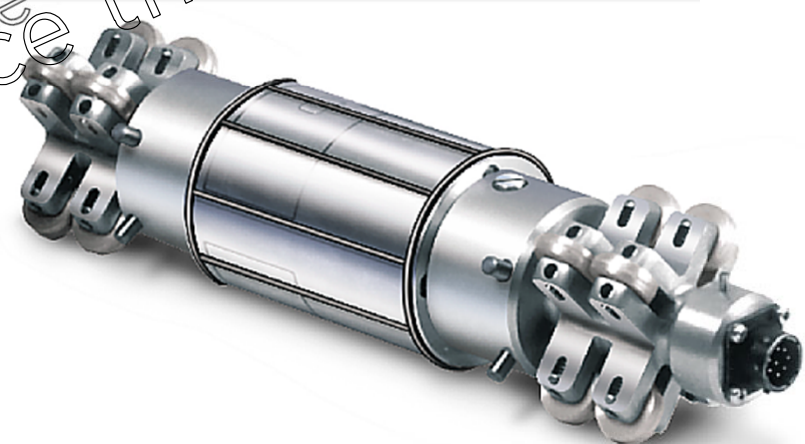
Barrel Bore Measurement



➤ Barrel Bore Measurement BBM

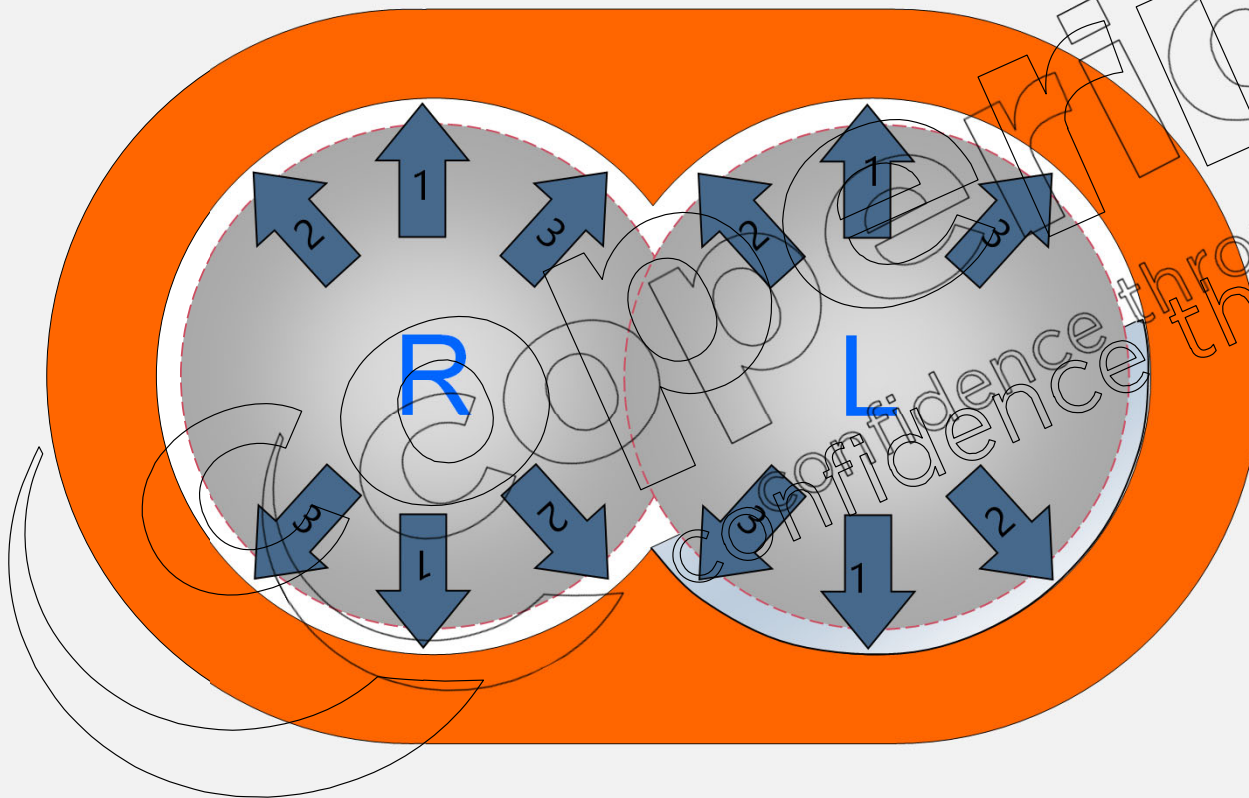
WHAT WE OFFER?

- Precise measurement of the barrel bore without disassembly of the processing barrels
- Analysis of the discovered defects, reporting and a detailed risk assessment
- Suitable for preventive failure detection to minimize production losses
- Suitable for ZSK 32 to ZSK 177





Barrel Bore Measurement BBM

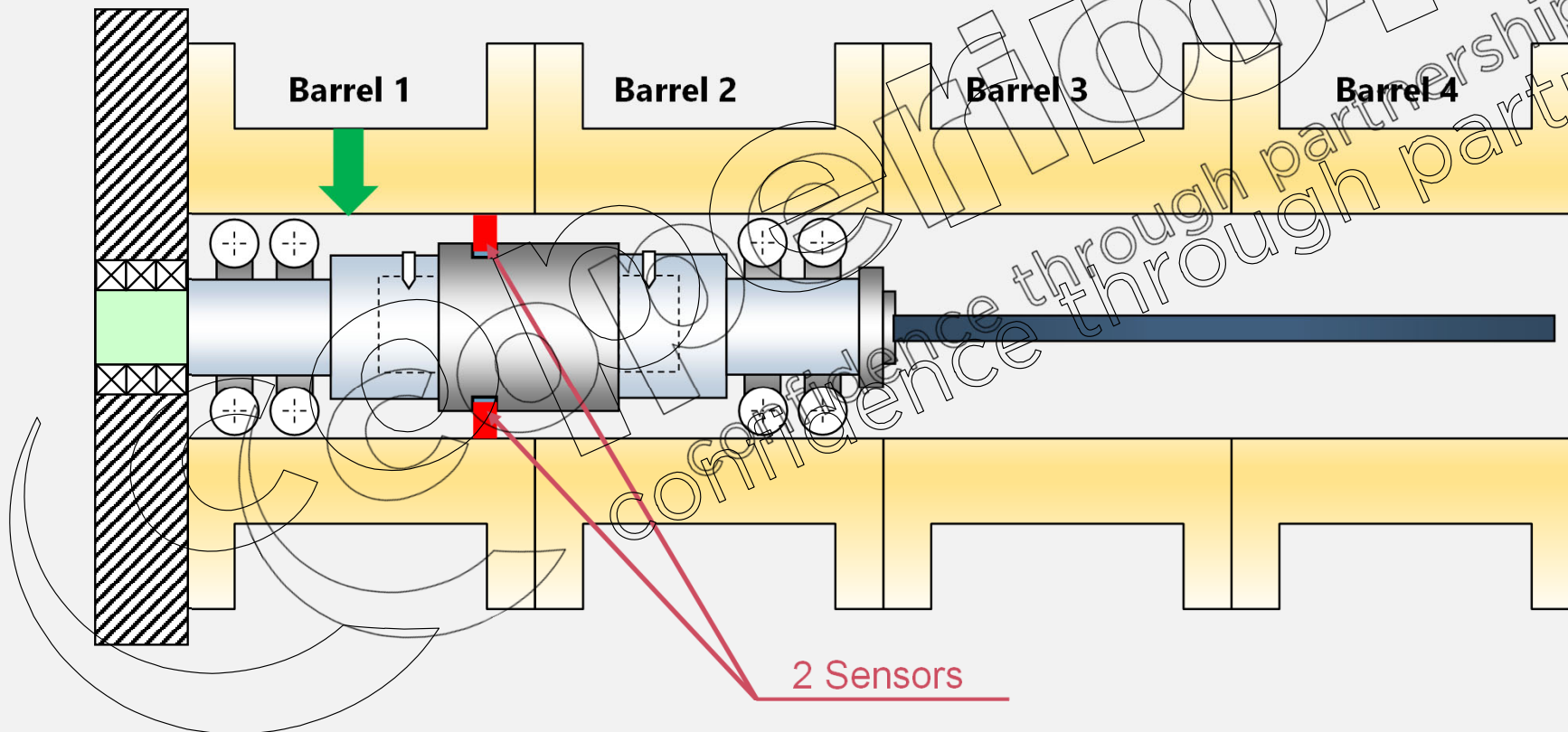


3 measurements in every bore

One measurement every 5 mm



Barrel Bore Measurement BBM





Barrel Bore Measurement BBM

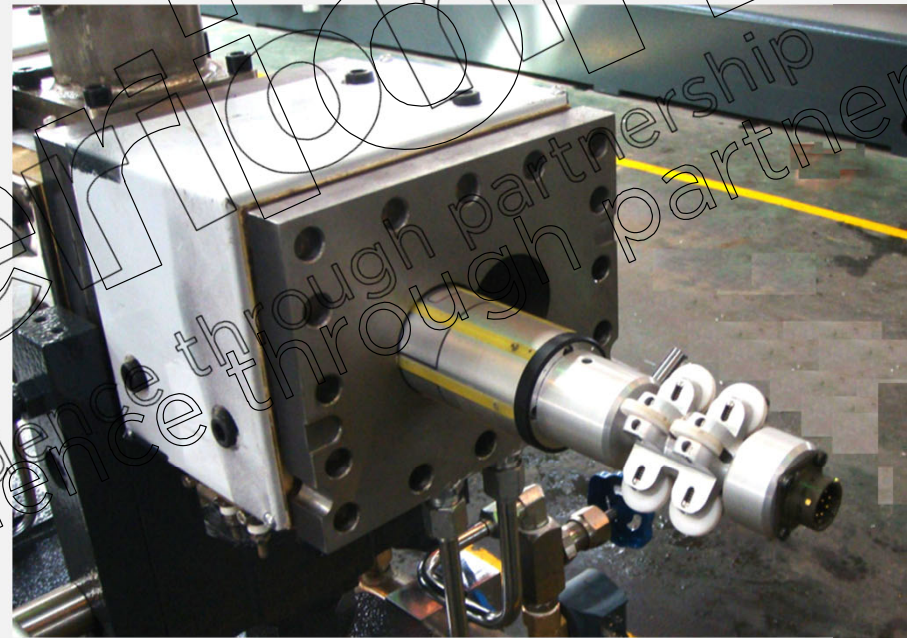


Preconditions:

Screw shaft removed

Barrel inner surface cleaned

Extruder at ambient temperature

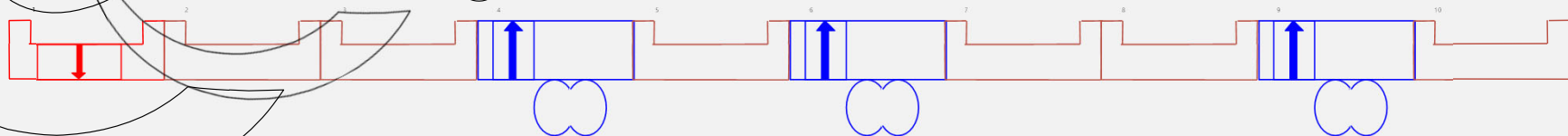


First BBM recommended after 3 years production

It takes 1 hour to measure an extruder



Barrel Bore Measurement BBM



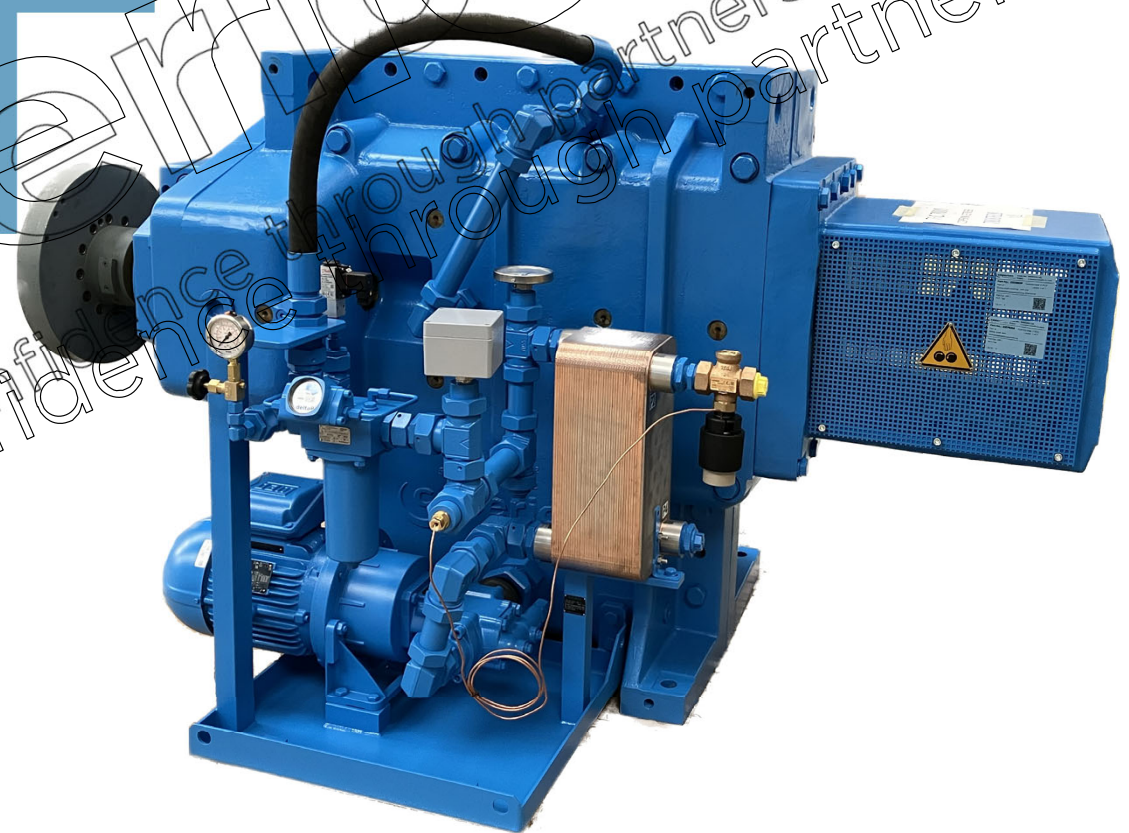
Data also available as .xls file

SSE can be checked at the same time



Gearbox

Preventive maintenance



Gearbox preventive maintenance

Coperion recommends gearbox overhaul after 5 years of operation

Replace all bearings and seals

Check gearwheel tolerances

Magnetic particle test of all shafts

Check timing of output shafts

Assembly and none load test run



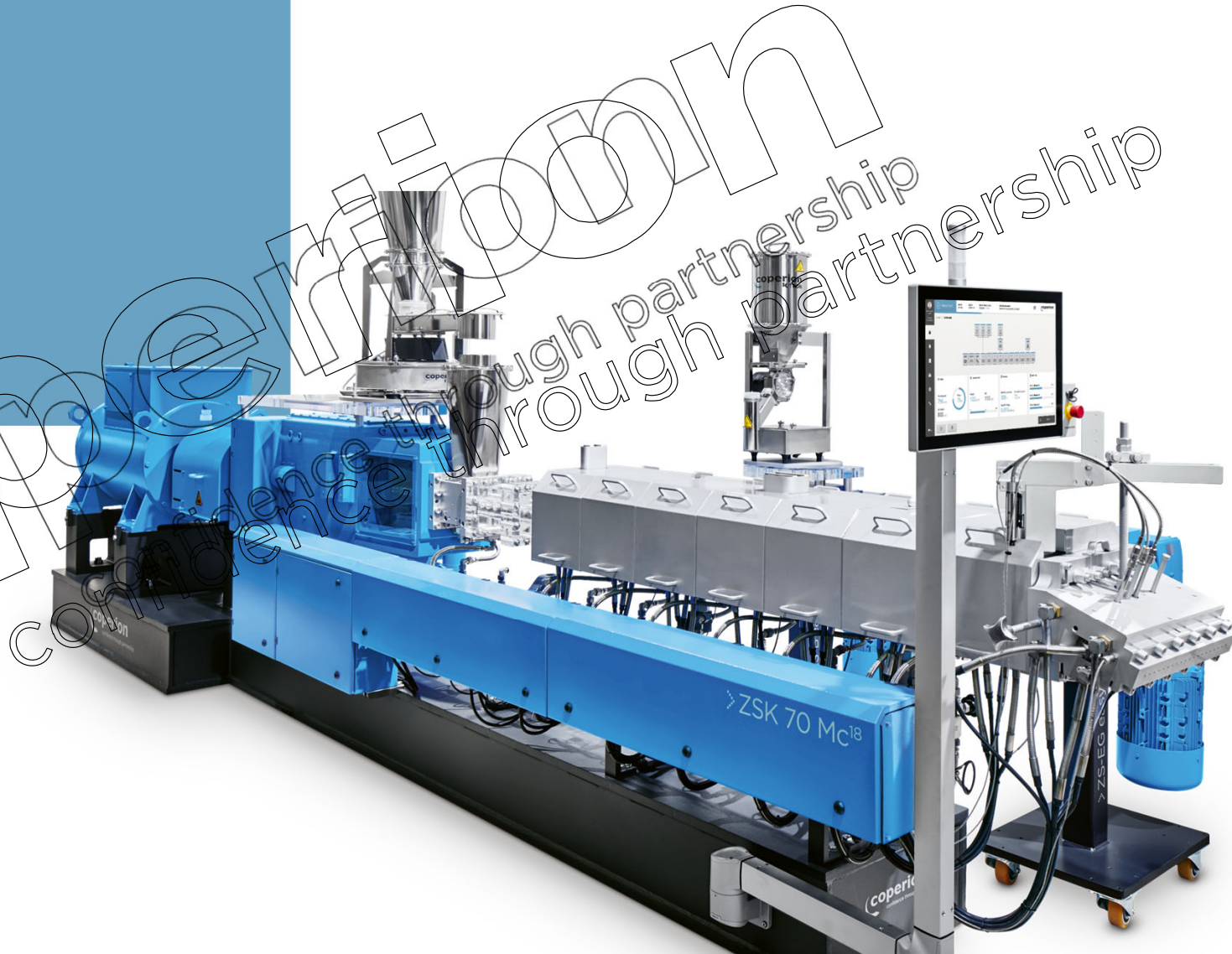
Gearbox preventive maintenance

Saving money on maintenance can become costly





Modernization





Modernization

OLD



NEW



OLD



NEW



Modernization of existing machines

- Improve Operator Safety
- Increase reliability
- Increase throughput
- Reduce energy consumption
- Eliminate bottlenecks
- Replace obsolete equipment (control systems)

THANK YOU VERY MUCH
FOR YOUR ATTENTION

CONTACT

Shinta Hirata

Service Manager

3-7-3, Shin-Yokohama, Kohoku-ku,
Yokohama, Kanagawa 222-0033, Japan

Phone +81-45-595-9801

E-Mail shinta.hirata@coperion.com

www.coperion.com

You're very welcome to follow us.



coperion

confidence through partnership